



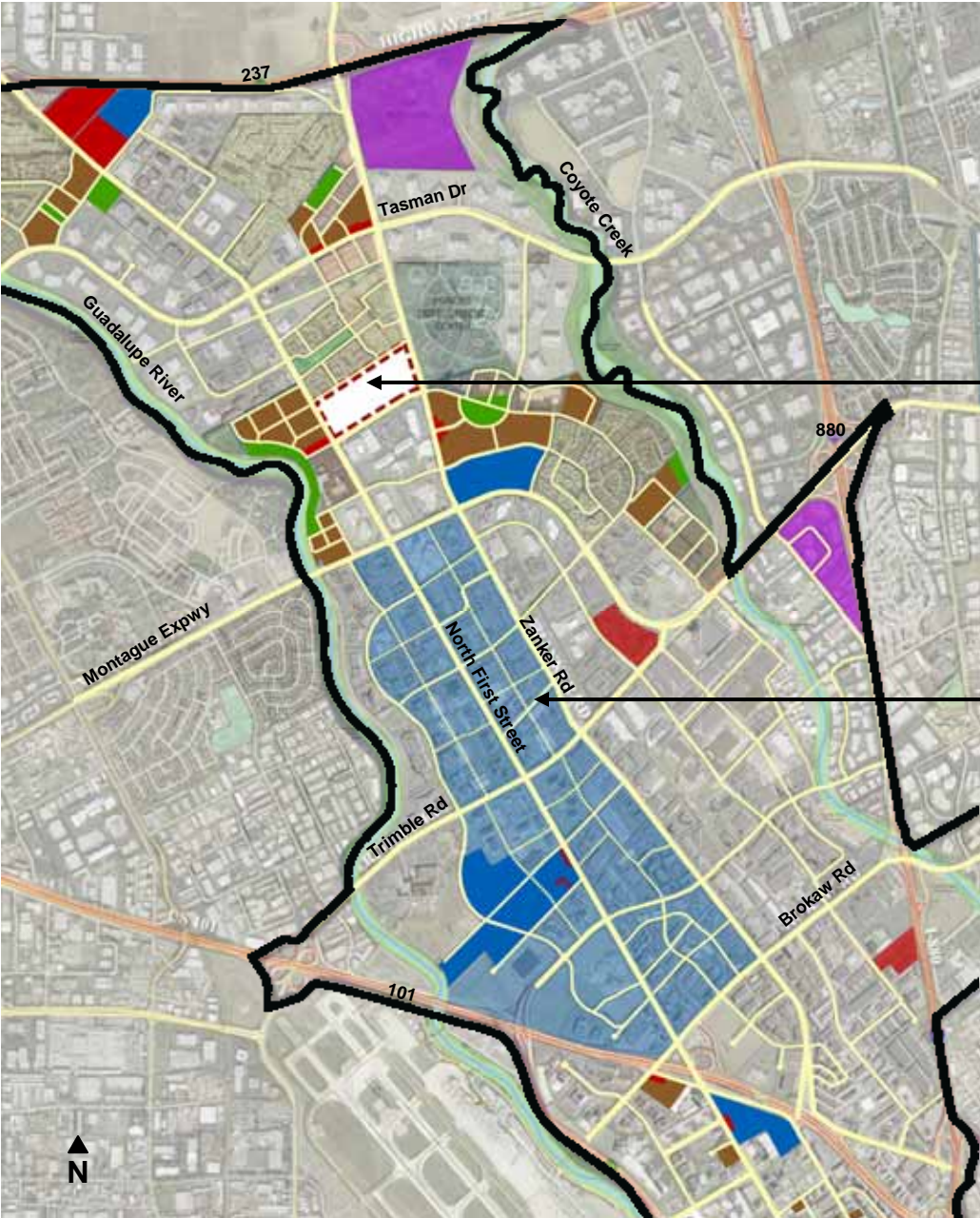
Place Making Moitozo Site Case Study

FIELD
PAOLI

San José Neighborhoods Planning Taskforce





CITY OF
SAN JOSE
CAPITAL OF SILICON VALLEY

Area Context



Moitozo Site

Industrial Core

-  Proposed Residential including amenity retail
-  Proposed Office including amenity retail
-  Potential Regional Retail
-  Potential Neighborhood Retail

Site Context

166 Baypointe
Retail:
4,000 s.f.
Residential:
240 units

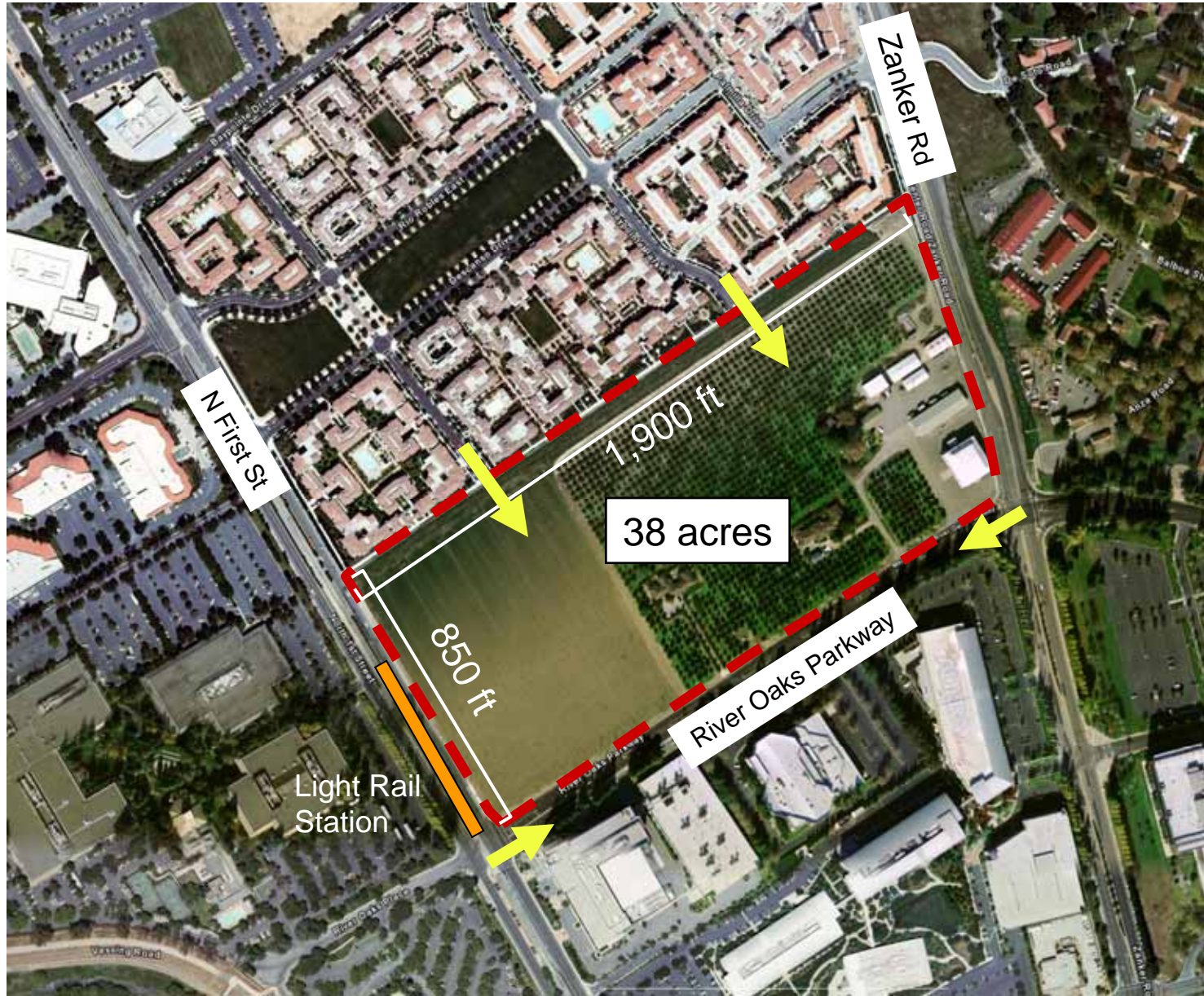
Riverview
Retail:
40,000 s.f.
Residential:
1600 units



Crescent Park
Retail:
15,000 s.f.
Residential:
1,781 units

3200 Zanker
Road
Office:
470,400 s.f.

Site



Proposed Program

Retail:

2 Anchors: 85,000 sf

3 Restaurants: 24,000 sf

12-13 Shops: 20,000 sf

Total: ±130,000 sf

Parking:

Retail: 420 spaces (4/1000)

Restaurants: 192 spaces (8/1000)

Community Park:

5 acres

School:

Building: 66,000 sf

Site: 4 acres

Community Center:

Building: 20,000 sf

Parking: 80 spaces
(4/1000)

Library:

Building: 10,000 sf

Extension: 10,000 sf

Parking: 13/26 spaces
(1.3/1000)

Proposed Program





Retail/ Mixed-Use

Kierland Commons
Phoenix, AZ



Town Center

Victoria Gardens
Rancho Cucamonga , CA



Neighborhood Retail Center

Pleasant Hill, CA



Library

Belmont Library, CA





Community Center

Union City Sports Center
Union City, CA



Library/ Community Center

Almaden Library and Community Center
San Jose, CA



Elementary School

Horace Mann Elementary
San Jose, CA



Elementary School

Bessie Carmichael School
San Francisco, CA



Community Park



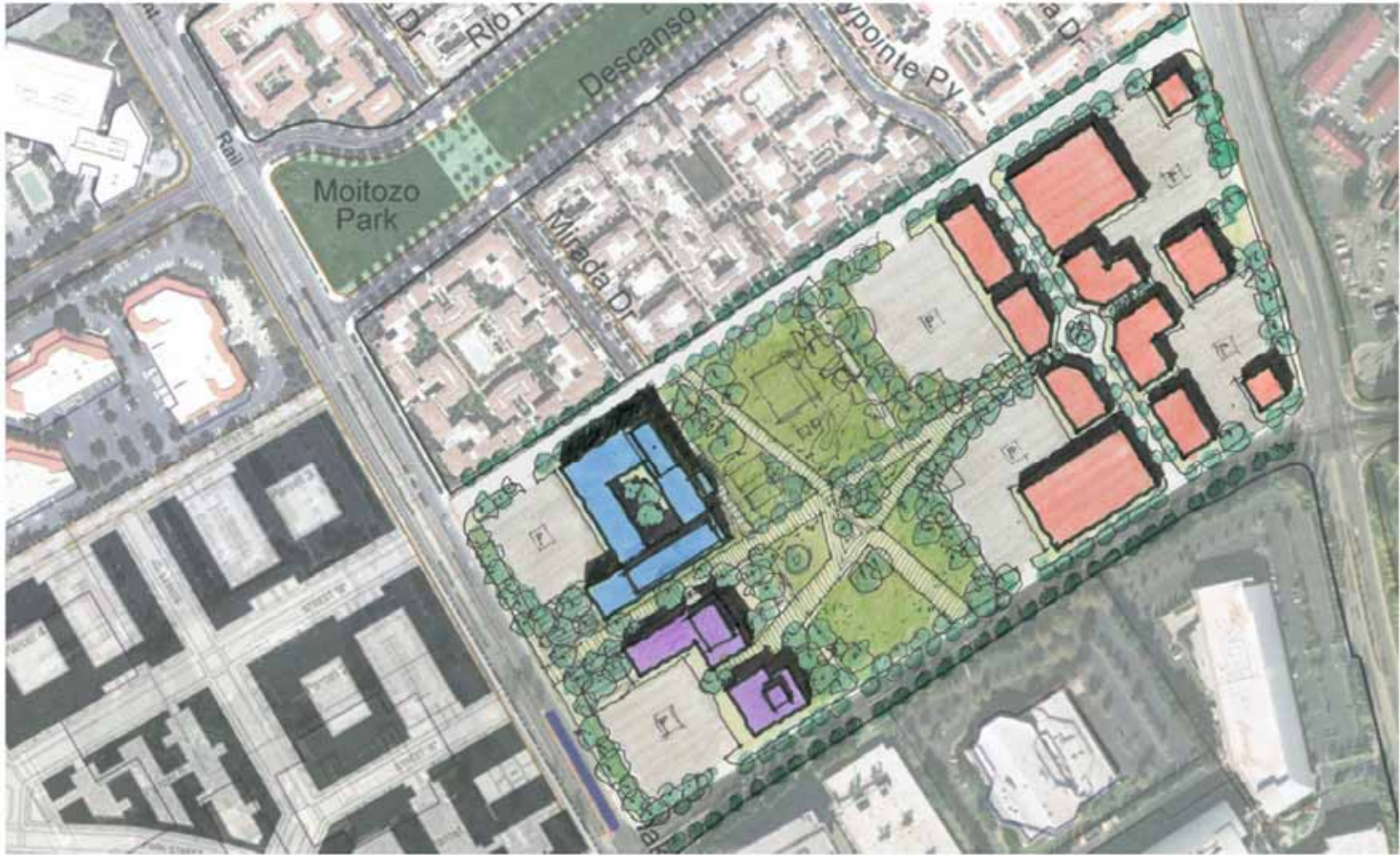
Community Park

Shared School and Community Park
Bessie Carmichael School

Alternative A: Main Street Blocks



Alternative A: Main Street



Main Street



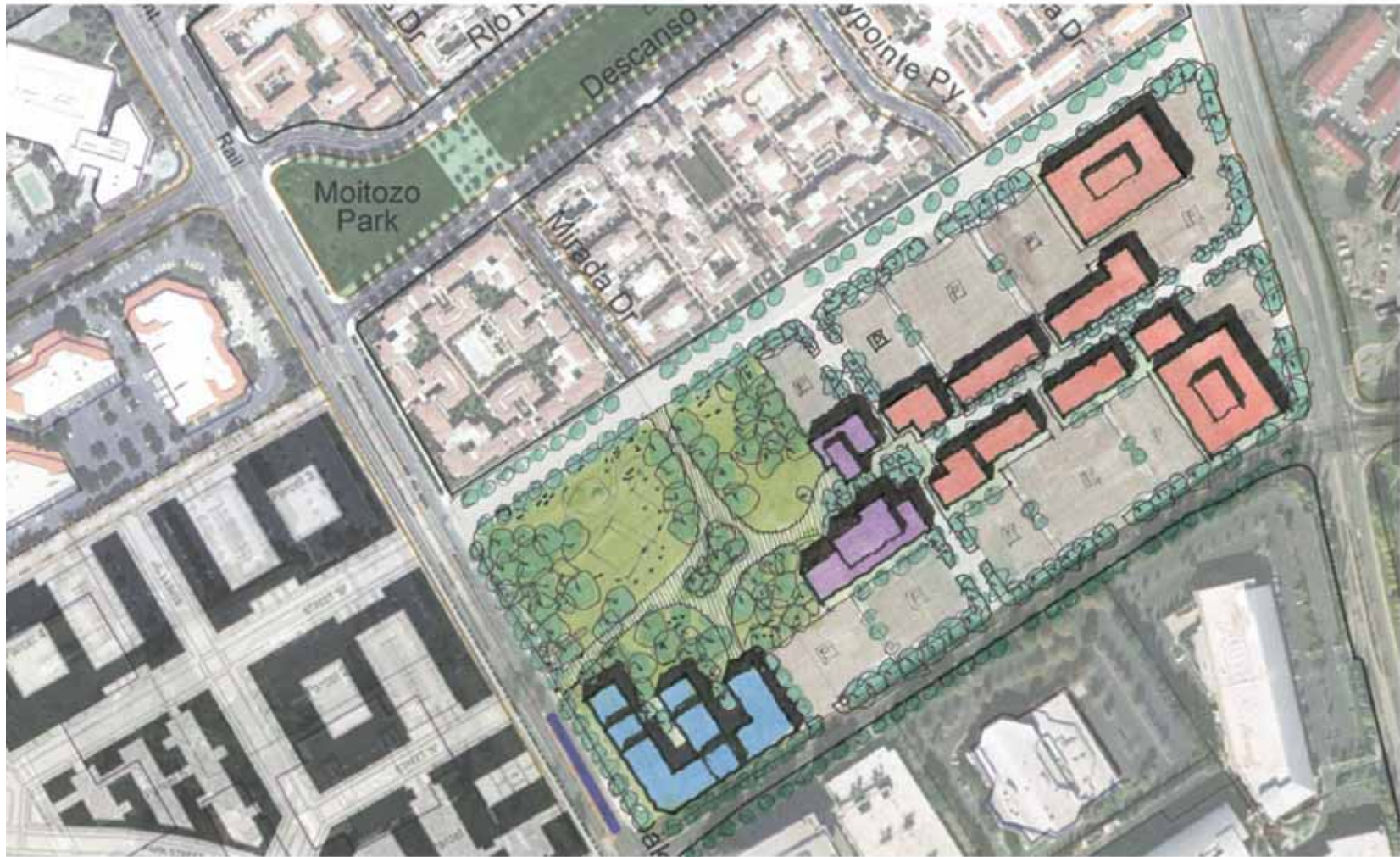
Alternative B: Town Square



Town Square



Alternative C: Moitozo Center



Moitozo Center



Guiding Principles

1. The “Moitozo Site” should be explored as a center for North San Jose.
2. The site should have a mix of community and neighborhood serving retail stores.
3. Community uses could include an elementary school, a park, a square, a community center and a library.
4. Retail stores could include a mixture of shops, stores, cafes and restaurants.